



**Linköping**  
Where ideas come to life

# Family Welfare Center

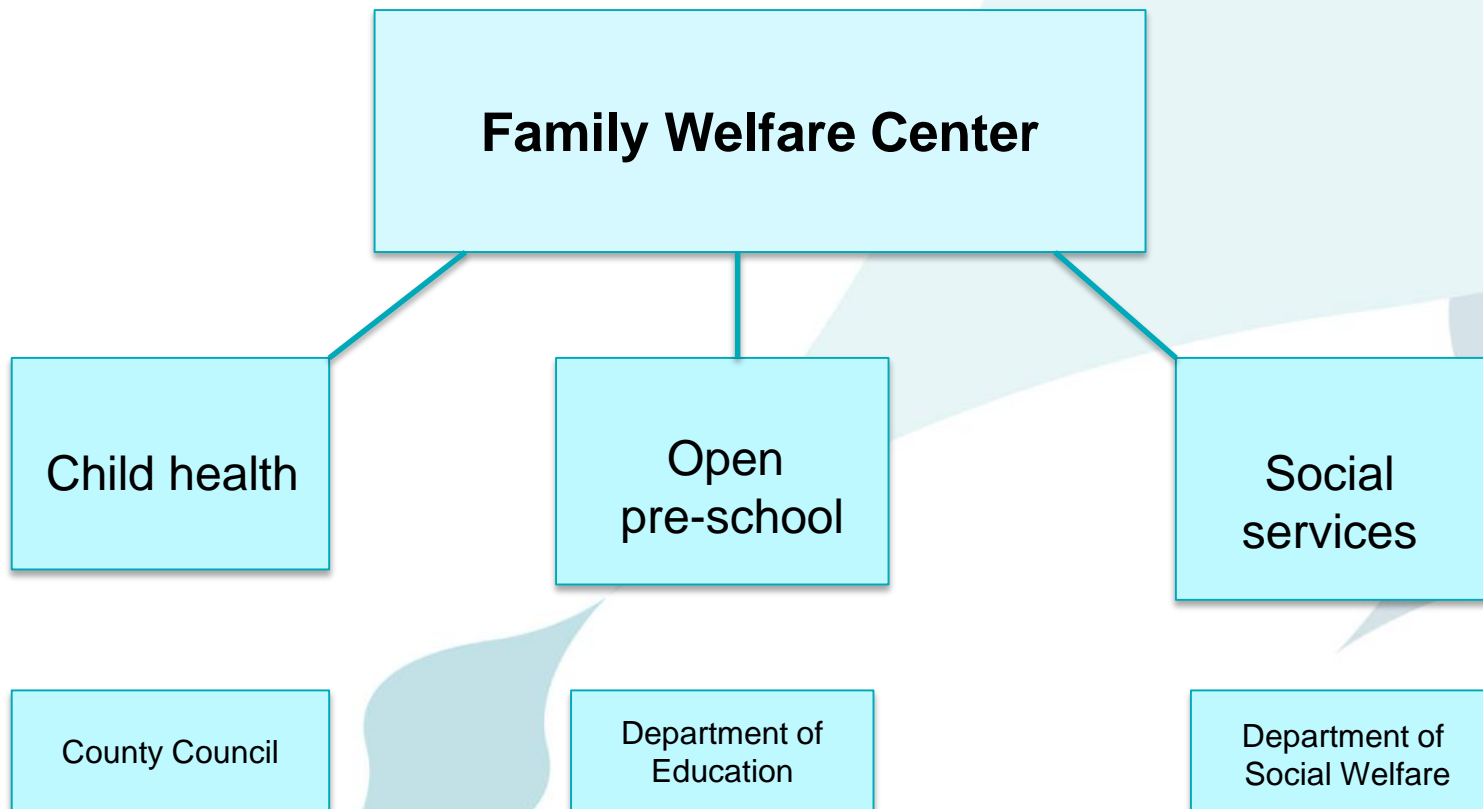
**A meeting point for all parents with children 0-5 year**

**A Family Welfare Center include child health, open preschool and social services with emphasis on prevention. They work closely together**

The objectives of the work is to take the whole family's lives to promote good health among children and parents by:

- be available as a close venue
- strengthen the social network around the children and parents
- create work where parents and children are involved
- provide easily accessible support
- be a knowledge and information center

## Parents and children 0-5 years in the neighborhood



# **Link person – Bridge builder**

Operate as a cultural and linguistic link between parents and professionals.

They establish contact with parents and provide information and promote activities, motivate to visit them and participate side by side with the parents.

Link persons are seen as very trustworthy because they have earlier been in the situation that the newly arrived are in now.

# Linkpersons - Bridgebuilders

**What are the most urgent needs amongst newly arrived parents?**

- Information about preschool and school
- To discuss in their origin language about being a parent in Sweden
- Knowledge and methods to support the child's development
- Possibilities to speak Swedish in their home environment
- Help with contacts to authorities

# Where do linkpersons act?

- Family welfare centers
- Pre schools and schools
- Social work
- Group activities in the neighborhood

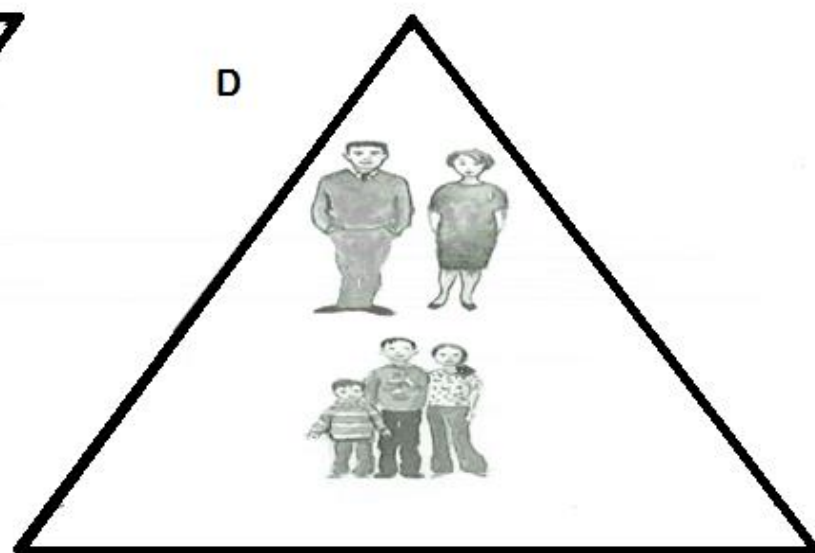
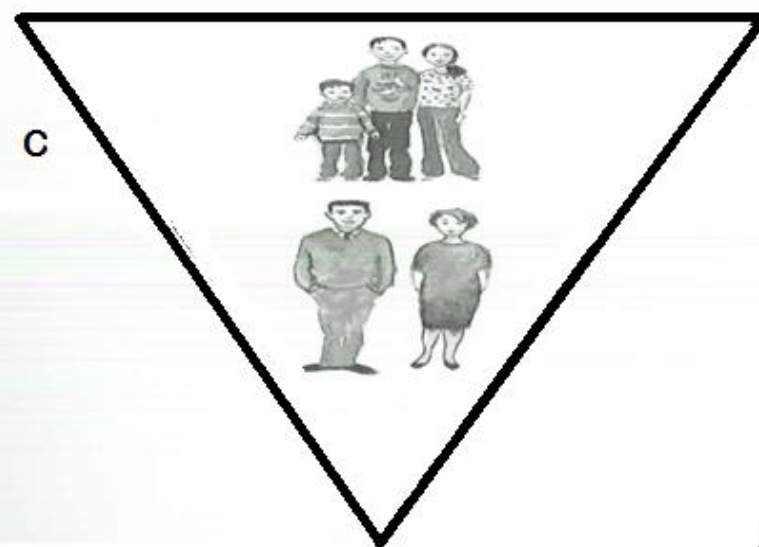
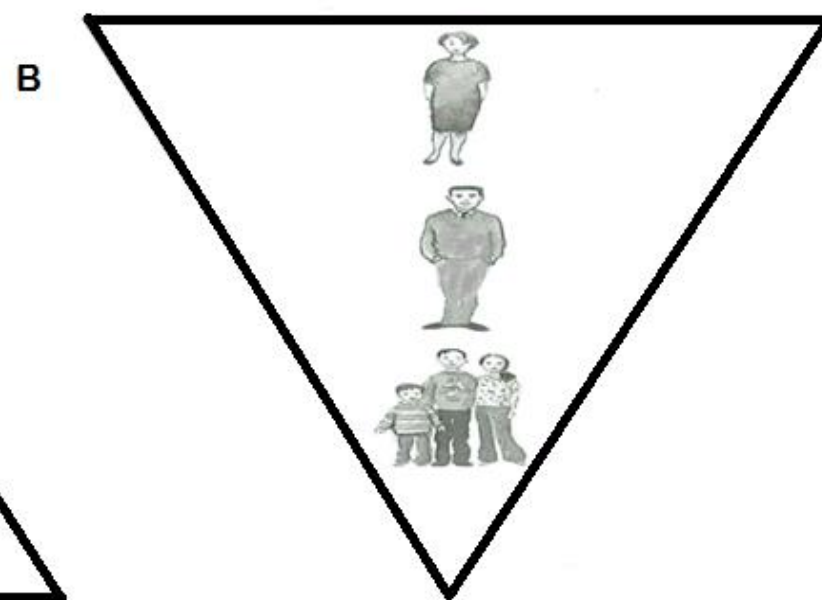
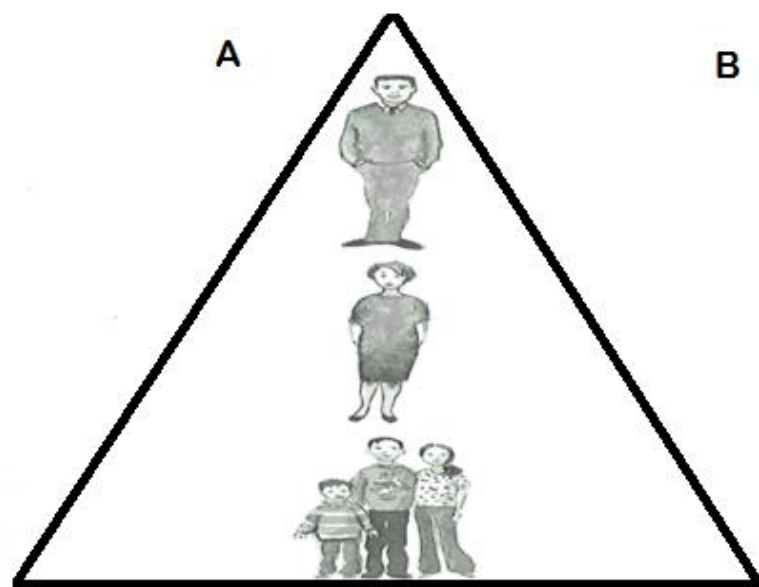
## **Qualifications for to be a link person**

Double cultural competence

Good skills in Swedish language

Educated in an parenting method

Experience from the school and preschool





# **Our statement**

Work targeted to foreign born needs people who work as link persons to be successful.